



KETEK
GROUP

Results Driven.

WASTE AUDITS

WHAT'S IN YOUR GARBAGE?

**Municipal Waste Management
Begins with a Proper
Waste Audit***

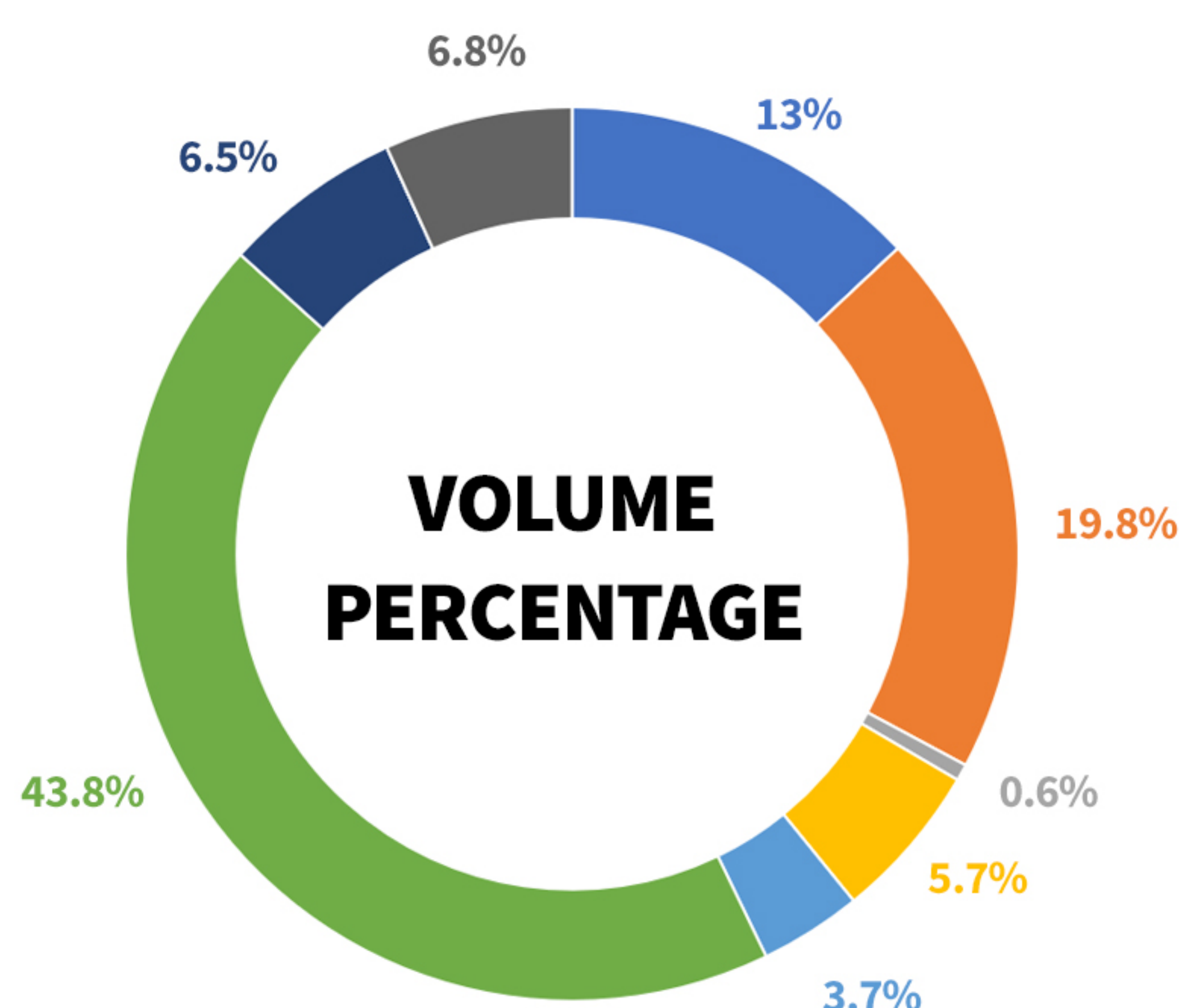
Garbage is a messy and expensive subject, and it never seems to stop. How efficient are the recycling programs you have in place? How much recyclable material is ending up in the landfill? Is there a better way to deal with it? A waste audit can tell you.

A waste audit gathers data about waste generated by households and businesses in your community. We gather information on waste composition and help you determine

how efficient your recycling programs are, ultimately reducing the amount of waste going to disposal. You can learn where your waste is coming from, how it's being handled and where it's going. This allows you to develop a waste management plan, reduce your community's environmental footprint and save money.

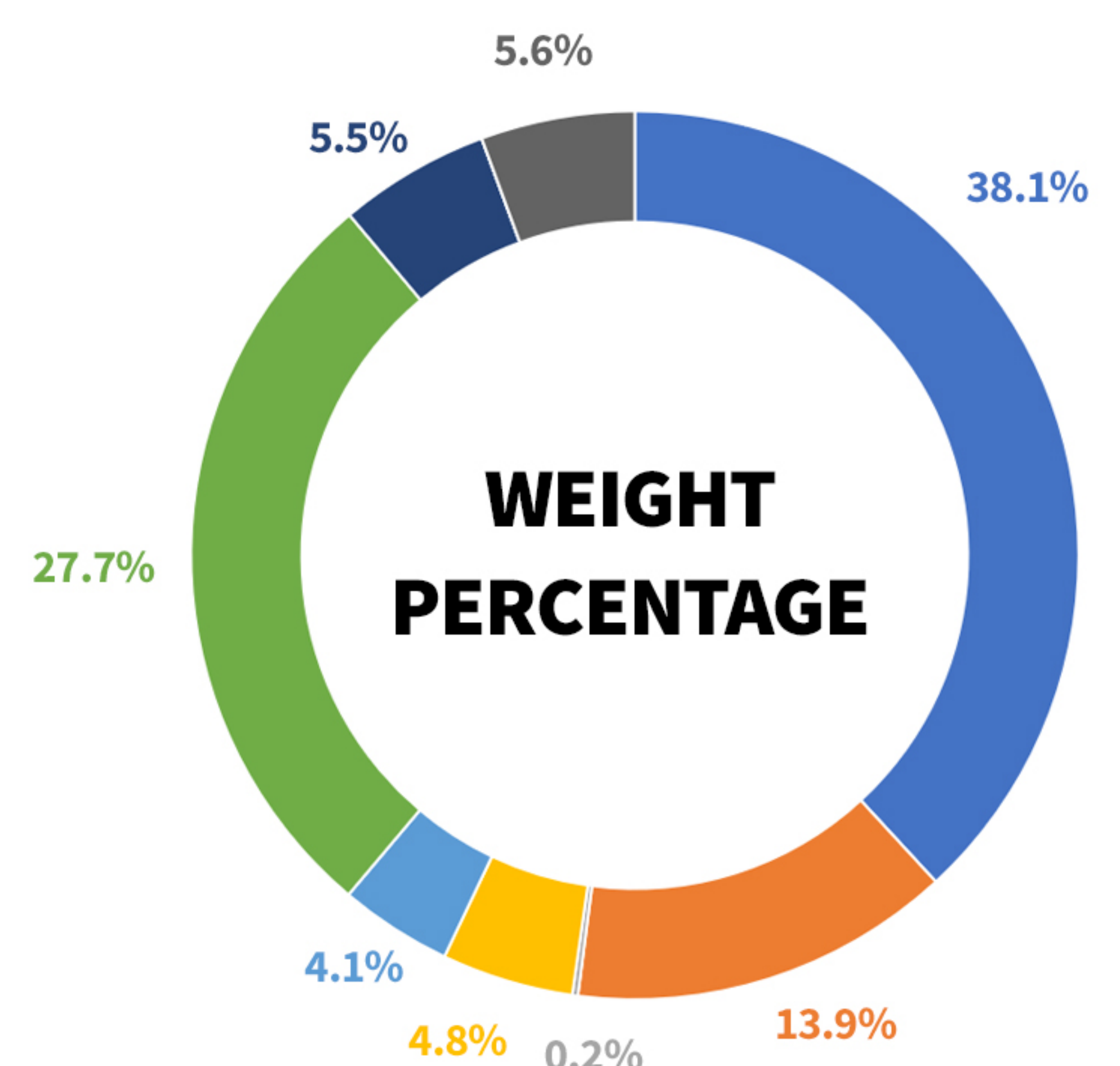
It's hard to make improvements to your current systems without knowing where you're starting!

Typical Results From a Municipal Waste Audit



WASTE CATEGORIES

- ORGANICS
- PAPER
- WOOD
- METALS
- GLASS
- PLASTICS
- CONSUMER PRODUCTS
- HAZARDOUS WASTES



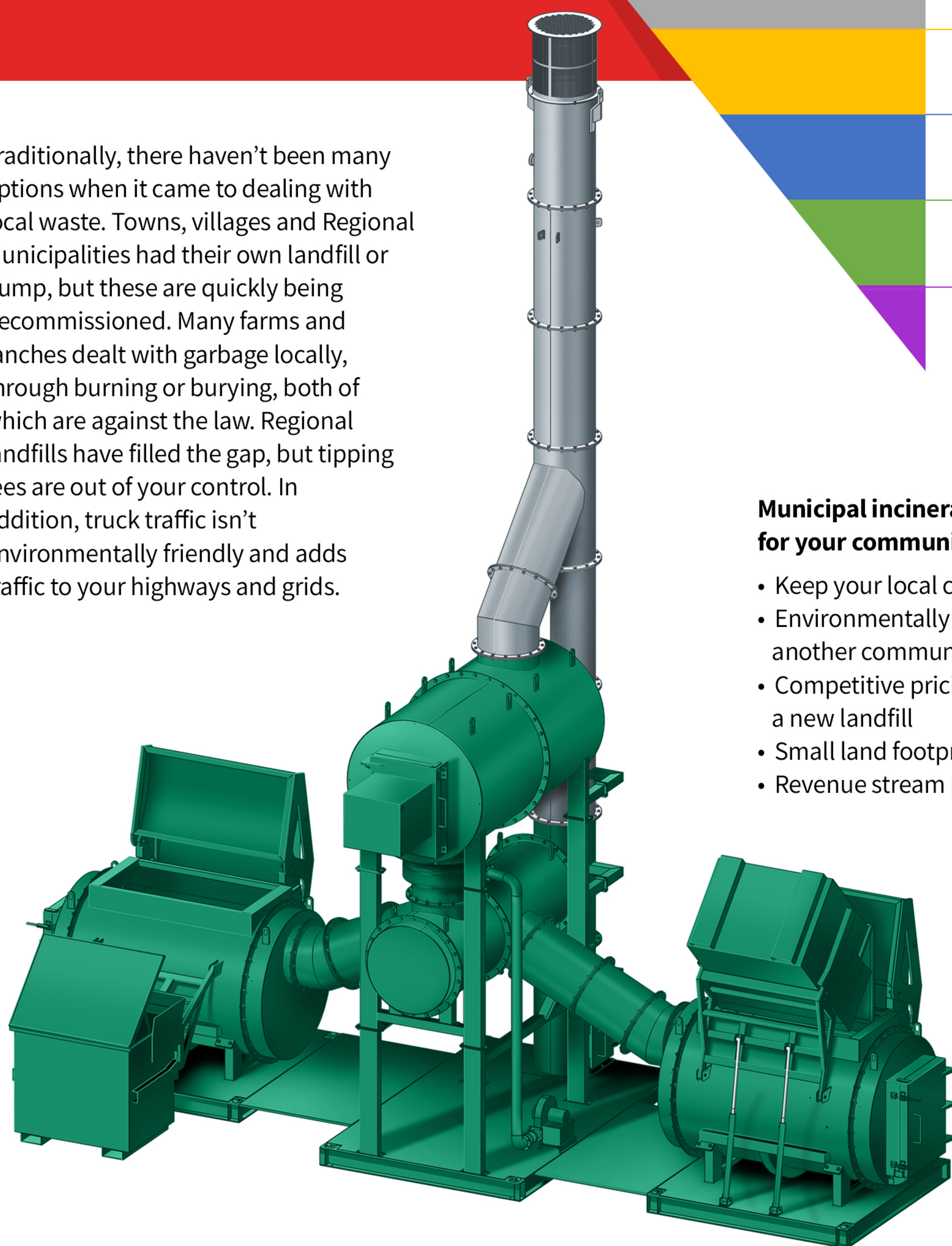
*Ketek is accredited by 

Results Driven.

MUNICIPAL INCINERATION – PYROLYTIC THERMAL OXIDATION (PTO)

Incineration

Traditionally, there haven't been many options when it came to dealing with local waste. Towns, villages and Regional Municipalities had their own landfill or dump, but these are quickly being decommissioned. Many farms and ranches dealt with garbage locally, through burning or burying, both of which are against the law. Regional landfills have filled the gap, but tipping fees are out of your control. In addition, truck traffic isn't environmentally friendly and adds traffic to your highways and grids.



REDUCE

REUSE

RECYCLE

ENERGY

INCINERATION

LANDFILL

Municipal incineration can be the key to success for your community!

- Keep your local community in control of its waste
- Environmentally superior to shipping your waste to another community for landfilling
- Competitive pricing, generally less expensive than a new landfill
- Small land footprint
- Revenue stream possibilities

CONTACT KETEK FOR MORE INFORMATION:

Toll free number: 1-855-447-5050
Tel: 780-447-5050

Email: info@ketek.ca
Website: ketek.ca



KETEK
GROUP

Results Driven.